

Curcumin Extrakt 45

Curcumin with 40x
greater bioavailability



150 mg of curcuminoids
per daily dose



Dear customers,

Curcumin, a natural substance extracted from turmeric root has already seen several thousand years of use in Asian natural history. However, curcumin is difficult for the human organism to absorb as it is fat-soluble and is virtually impossible to utilise in the aqueous intestine.



Dr. med. Dipl.-Ing. Georg Wolz

Unlike many other products, to which piperine or polysorbates are added, our curcumin extract 45 is made from substances of purely natural origin. In order to boost its bioavailability, the substance is wrapped in a sheath of cyclodextrin, a natural compound of starch. This makes the product 40x more bio-available than customary dosage forms of curcumin.

Curcumin Extrakt 45 Dr. Wolz

- ✓ **Curcumin with 40x greater bioavailability**
- ✓ **150 mg of curcuminoids per daily dose**
- ✓ **without piperine and polysorbate.**





What is Curcumin?

Turmeric (*Curcuma longa*), also known as yellow ginger or curcuma from the ginger family is native to India and Southeast Asia. Many people will be familiar with turmeric from its use in the production of curry powder and as a natural dye. But furthermore, turmeric has already been used in Indonesia and India (Ayurveda) for several thousand years. The main ingredient is curcumin and other curcuminoids and tetrahydrocurcuminoids, which are among the secondary phenol plant substances.

Problem: bioavailability

However, the benefit of curcumin has not yet been able to be fully exploited because we can only absorb very little natural curcumin. Or to put it another way, the bioavailability of curcumin is very low. This is down to the fact that curcumin is fat-soluble and so can only be absorbed with difficulty in an aqueous intestinal environment. Up to 90% of it is excreted. This is particularly evident if you examine the bowel of someone who has eaten curcumin beforehand. It is dyed yellow - a sign that curcumin is not metabolised or, if so, only to a limited extent. In order to improve bioavailability, curcumin was previously chiefly combined with piperine. Although the blood concentration then rose, it only continued for an hour and then rapidly reverted to the original value. So a sustainable take-up of curcumin cannot be achieved with piperine.

Curcumin Extrakt 45: **Strength of a Tiger!**



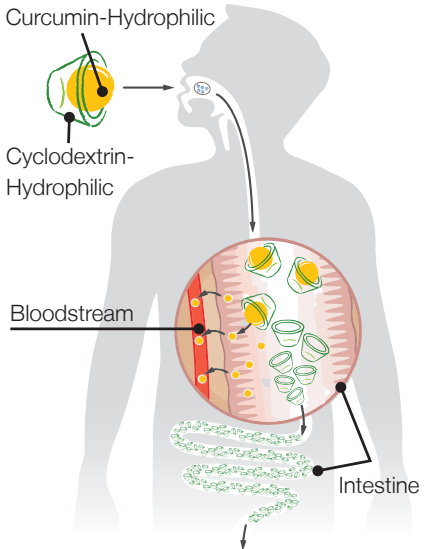
Curcumin from Dr. Wolz: 40x greater bioavailabilit

Dr. Wolz's Curcumin Extrakt 45 has succeeded in significantly increasing the bioavailability of curcumin and providing the body with as much curcumin as possible so that its benefit can be fully utilised. The bioavailability of Dr. Wolz's Curcumin is up to 40 times higher than that of pure curcumin powder or conventional curcumin products!

How is this possible?

The fat-soluble (lipophilic) curcumin molecules are embedded in a ring of glucose molecules (so-called cyclodextrins) to form a hydrophilic (water-friendly) exterior and a lipophilic, i.e. fat-friendly cavity in their interior. The curcumin molecule remains within this cavity until it has reached the bowel. There it is transported individually by the cyclodextrin molecules to the intestinal wall where it can be absorbed while the cyclodextrin is broken down or excreted.

Each curcumin molecule is packed separately in the cavity of a cyclodextrin compound. Cyclodextrin is a degradation product of starch and consists of oligo-saccharides.

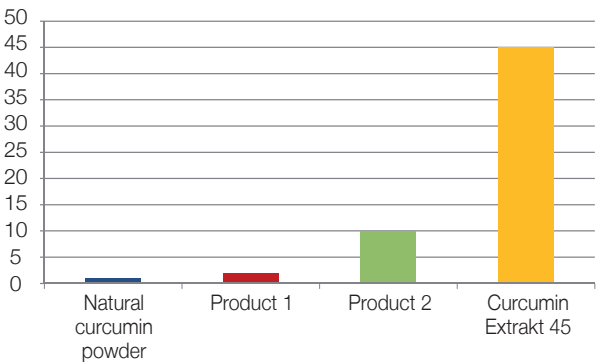


Scientifically proven

The greater bioavailability of curcumin has also been scientifically certified. This involved giving the study subjects one dose of normal curcumin and three different curcumin products for which the manufacturers claim the bioavailability to be especially high - incl. Dr. Wolz's Curcumin Extrakt 45. Curcumin Extrakt 45 was absorbed as much as 40 times more efficiently than the leading curcumin products and the pure curcumin powder! So it follows that Curcumin Extrakt 45 supplies the organism with the physiological nutritional potential of curcumin to a much greater degree than previously available curcumin products.

Study:

comparison of the relative absorption of curcumin



Ingredients:

Capsule content: micro-encapsulated curcumin (gamma cyclodextrin, curcumin 15%). Capsule shell: hydroxypropylmethylcellulose.

Average nutritional values

For 3 capsules

Curcuminoids

150 mg

Dosage recommendation:

The recommended dosage is not to exceed 3 capsules a day. Take ideally 3 capsules with a little liquid at intervals throughout the day. Sufferers of gall-bladder disorders and anybody on anticoagulants should consult their doctors before taking the product. The product is not suitable for pregnant women. Food supplements are not a substitute for a varied, balanced diet and a healthy lifestyle.



Gluten-free and does not contain any lactose, fructose, dyes, piperine or polysorbates

There are many good reasons for Dr. Wolz:

- ✓ Innovative family business with over 50 years of experience
- ✓ Global trust: Customers place their faith in Dr. Wolz in over 35 countries.
- ✓ Up-to-date science: We collaborate closely with leading institutes and hospitals in our own R&D.
- ✓ All production under the same roof: Every product is manufactured in our own factory in Geisenheim/the Rhinegau.
- ✓ Highest standards of quality: All our products are regularly inspected by independent laboratories.
- ✓ Our quality management is certified as conforming to ISO 9001 and HACCP.



Information-Coupon

- Additional product information
- Brochure „Vitalkomplex Dr. Wolz“
- Brochure „KinderImmun Dr. Wolz“
- Leaflet „Zell Oxygen Immunkomplex Dr. Wolz“

Name

Street





Town / ZIP

Distributed by:

Pr35E 11/20

Natural, proven effective

Dr. Wolz Zell GmbH · Marienthaler Str. 3 · 65366 Geisenheim/Germany
Tel.: 06722-56100 · info@wolz.de · www.wolzonline.de

 www.facebook.com/Dr.Wolz ·  twitter.com/Dr_Wolz
 [instagram.com/drwolz](https://www.instagram.com/drwolz) ·  [youtube.com/DrWolz](https://www.youtube.com/DrWolz)